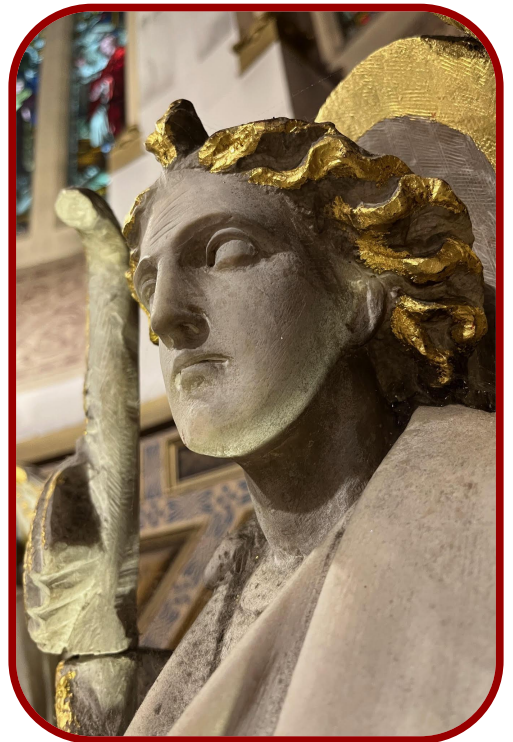




# Parish Giving Campaign Week 1



St Peter's Church, Leamington

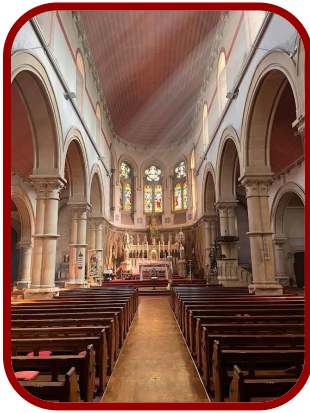


Archdiocese of Birmingham -  
Registered Charity Number 234216



The very first thing to say is a clear **thank you** to everyone who supports the life and mission of St Peter's. This is done in so many ways, by prayer, by volunteering, by being present and by giving to the collection week by week. This has enabled the worship of God, the celebration of the sacraments, the building up of the Christian community here, the service of our neighbours and so much else to continue throughout our history and up to the present. Thank you indeed.

It is of course vital that we look to the future and ensure the sustainability of our parish. We have benefitted from the work and generosity of past parishioners and like our forebears here we need to be able to pass all that on to parishioners who come after us.



To the casual eye, it might seem that, with a lovely church, a large presbytery and a hall with so many spaces to use, so many active groups, and lively and varied congregations there is nothing to be concerned about. We must however be honest and recognise that our three large buildings all come with large running and maintenance costs. These costs are all increasing. We are already at the point where a backlog of currently unaffordable maintenance due on all our buildings has the potential to cause deep problems that may affect how we can use them.

Information about parish finances is freely available every year at the presentation of accounts (posted on the website), and there will be more in the coming two weeks.

But this appeal is **not** about finding one huge sum to put everything right all at once. It is about recognising that while our bills go up our income hasn't kept up. Running costs outstrip ordinary income. We have had both to spend our reserves **and** make sure that costs are cut; the cheapest suppliers are used and that we are as efficient in running the parish as possible.

Please support your parish that it may embrace the future as confidently as possible. The appeal is, therefore, about raising a dependable, ordinary income so that we can pay our way, and put money aside for the maintenance of three large buildings.

We are stewards not only of our parish and its buildings but also of our own time, talents and money for all these are ultimately gifts to us from the God we serve. Please consider the information put before you over these three weekends. Please pray about what you hear and about how you should respond. We are all different, with varying amounts of time, various talents and different financial circumstances. Our responses will quite reasonably be different.

St Peter's parish clearly has much to offer to God, to all who come and to the wider community. Please support your parish that it may embrace the future as confidently as possible.



Thank you all, and  
God bless you.  
*Fr Stephen*

## Our vision for our parish...

“Be rooted and built up in him, strengthened in the faith as you were taught, and overflowing with thankfulness.” Colossians 2:7

### Securing our foundations



As a parish - together with Fr Stephen, the Pastoral Council and our whole congregation - we share a long-term vision for St Peter's, designed to endure over the next twenty years. Our vision must be mission focused, reflect who we are, how we worship together, and how we serve the community and the world around us.

To look forward with confidence, we must first place our parish on firm financial foundations. By stabilising today, we secure tomorrow - freeing our time and energy to plan boldly and faithfully for the future, ensuring that St Peter's remains a place of welcome, worship and faith for generations to come.



### We will prioritise

#### ● MISSION

We are all called to be disciples, and to share the love of Christ through worship, welcome and witness. Our duty is for us all to work to strengthen our parish family and to reach out to serve all our brothers and sisters, both in our local community and beyond.

#### ● SUSTAINABILITY

We need to place our parish on firm financial foundations so that we can face any challenges the future may bring. Although structurally sound, our beautiful church requires significant repair and redecoration. We also need a parish hall that continues to serve our parish and the wider local community. Stabilising our parish finances is critical to enabling us to plan with confidence, meet expected and unexpected repair costs, and ensure we meet our responsibilities securely.

#### ● STEWARDSHIP

Without the foresight of our predecessors, our church would not be here today. Our job is to be faithful stewards, to care for and renew our church and its hall so they can continue to serve the parish and wider community for generations to come.

## What does St Peter's mean to me?

St Peter's is more than a building - it's our shared Catholic home, a place of prayer, of friendship and of belonging. Every one of us brings something different to its life and to its future, and everyone's circumstances are different too.

Rather than asking people to give according to a fixed percentage of income, we invite you to pause and think about what you can comfortably share from what's left after life's essentials - your disposable income. Whatever the amount, giving regularly and prayerfully helps to keep our parish family strong, ensures we can plan ahead with confidence, and sustains this place of welcome for years to come.

## Reflecting on how we support St Peter's by what we regularly contribute

We invite everyone to consider a regular contribution based on disposable income - that is, what remains after essential costs. These figures are examples, not expectations; what matters most is giving regularly and with gratitude.

If, after essential costs, a person has £500 a month left to spend as they want, then a donation to the parish of £5 a week (£20 a month) would be 4% of that disposable income. Disposable income means what's left after covering normal living costs - housing, utilities, essential food, transport, and family care costs. If however, someone's monthly disposable income was £1,000 then £10 a week (£40 a month) would represent 4%. Is giving 4% right for you? Only you can decide. Many vibrant non-Catholic Christian groups talk about the Biblical 10%, a generous gift indeed. How manageable is that? Or to reflect on this another way, is my weekly giving to the parish the rough equivalent of a Sunday paper £3, a pint of beer £5, a simple meal out £20, a tank of petrol £70? It can be helpful to see what we give to spending on other things in relation to what we spend on giving to the parish.

The choice, made reflectively and prayerfully, is entirely between you and God.

*Each of you should give what you have decided in your heart to give, not reluctantly or under compulsion, for God loves a cheerful giver. And God is able to bless you abundantly. 2 Corinthians 9:7-8*

